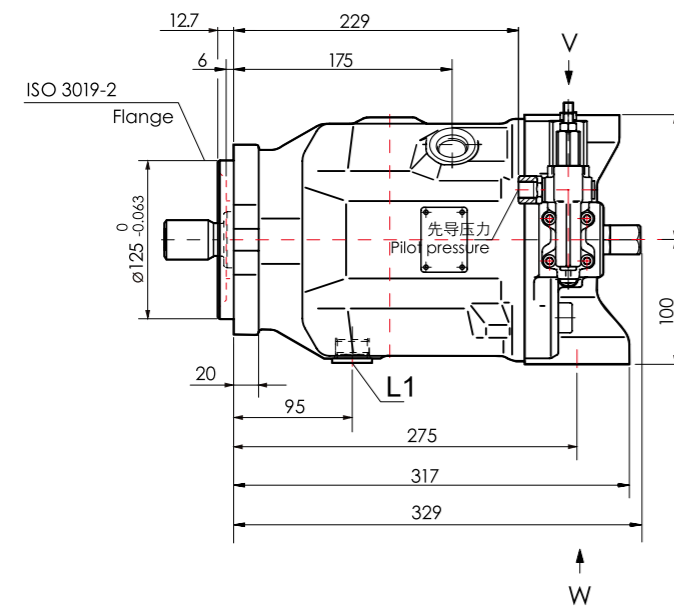


WA10VSO-100 安装尺寸图

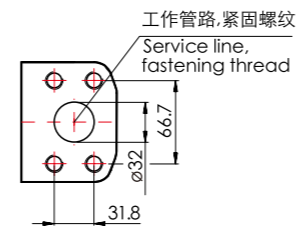
WA10VSO-100 SLNSTALLATION DIMENSIONS

DFR/DFR1压力和流量控制 Pressure and Flow Control

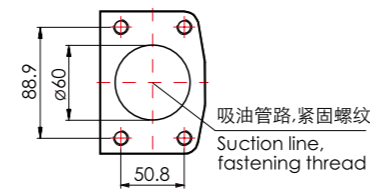
顺时针旋转 Clockwise Rotation



V 向局部视图 Detail



W 向局部视图 Detail



WA2FM 轴向柱塞定量马达 WA2FM AXIAL PISTON FIXED MOTOR

WA2FM是采用斜轴式设计的轴向柱塞定量马达,用于开式回路和闭式回路中的静液压传动,适用于行走机械和工业应用。

Fixed motor with axial tapered piston rotary group of bent-axis design, for hydrostatic drives in open and closed circuits. For use in mobile and stationary applications.

产品的特征和优点

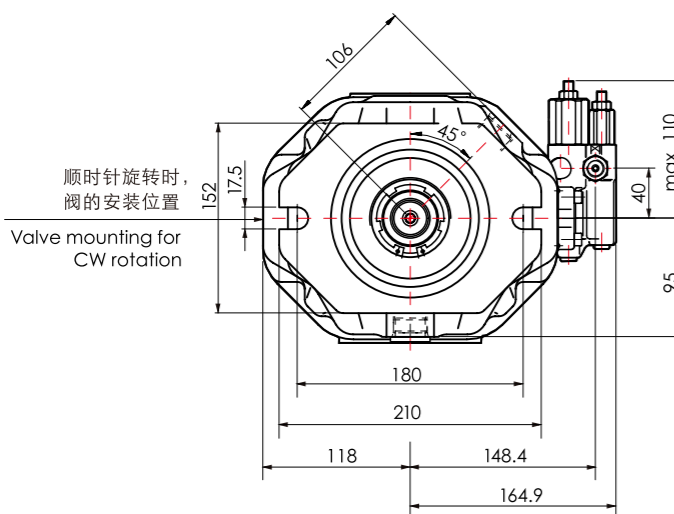
- ① 输出速度取决于泵的流量和马达的排量。
- ② 输出扭矩随高低压侧之间的差压而增大。
- ③ 具有高功率密度、总效率高。
- ④ 具有尺寸小、设计经济。
- ⑤ 带密封柱塞环的一体式柱塞设计。

Features and Advantages

- ① The output speed is dependent on the flow of the pump and the displacement of the motor.
- ② The output torque increases with the pressure differential between the high-pressure and the low-pressure side.
- ③ High power density and high total efficiency.
- ④ Small dimensions and economical design.
- ⑤ One-piece tapered piston with piston rings for sealing.

技术参数 (TECHNICAL PARAMETERS)

型号 Model	56	63	80	90
排量 Displacement	56.1 mL/r	63 mL/r	80.4 mL/r	90 mL/r
最高转速 Max. drive speed	5000 rpm	5000 rpm	4500 rpm	4500 rpm
最高转速(间歇) Max. drive speed (Intermittent)	5500 rpm	5500 rpm	5000 rpm	5000 rpm
输入流量 Input flow	281 L/min	315 L/min	362 L/min	405 L/min
旋转方向 Direction of rotation	R- 顺时针 Clockwise ; L- 逆时针 Anticlockwise			
工作方式 Operation mode	开式回路 Open circuit ; 闭式回路 Close circuit			



型号编码 (WA2FM SERIES TYPE CODE)

WA2F M 63 W V A B

标识 Code	轴向柱塞元件 Axial piston unit
WA2F	斜轴式结构, 定量 Bent-axis design, fixed

标识 Code	工作模式 Operation mode
M	马达 Motor

标识 Code	排量 Displacement
56	56.1 mL/r
63	63 mL/r
80	80.4 mL/r
90	90 mL/r

标识 Code	旋转方向(从轴端上看) Direction of rotation Viewed at shaft end
W	正反可逆 Viewed on drive shaft, bidirectional

标识 Code	密封件 Seals
V	FKM氟橡胶 Fluor-caoutchouc

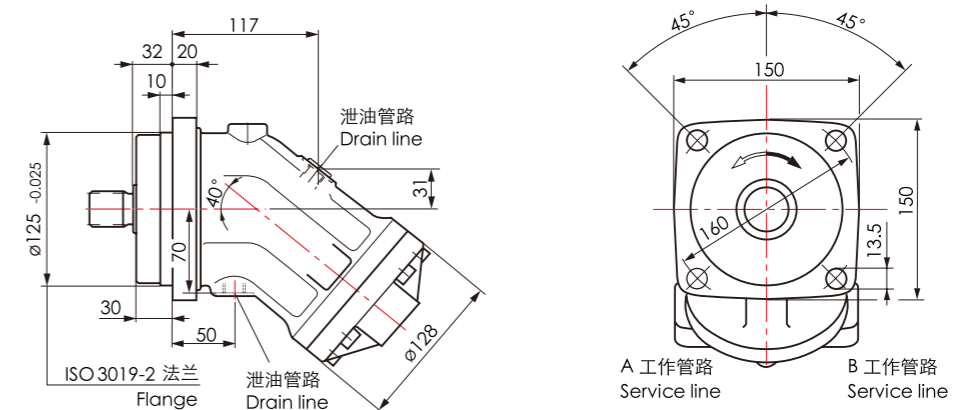
标识 Code	安装法兰 Mounting flanges
B	ISO 3019-2 4孔 Hole

标识 Code	传动轴 Drive shafts					
	45	56	63	80	90	
A	/	✓	✓	✓	✓	花键轴 DIN5480
Z	✓	✓	/	✓	/	Splined shaft
B	/	✓	✓	✓	✓	平键轴 DIN6885
P	✓	✓	/	✓	/	Parallel keyed shaft

("✓": 可供货 Available; "/": 无供货 Not Available;)

安装尺寸图 - 规格56 / 63

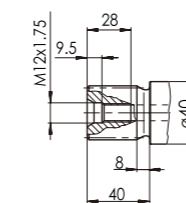
SLNSTALLATION DIMENSIONS - Dimensions size 56 / 63



轴伸 Drive shafts

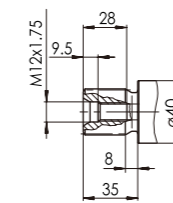
规格 56/63

A 花键轴 DIN 5480
W35x2x30x16x9g
P_N = 400 bar



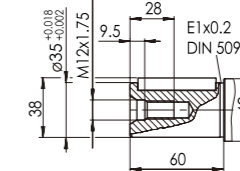
规格 56

Z 花键轴 DIN 5480
W30x2x30x14x9g
P_N = 350 bar



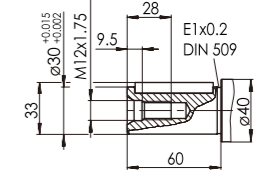
规格 56/63

B 平键直轴, DIN 6885, As10x8x50
P_N = 350 bar



规格 56

P 平键直轴, DIN 6885, As8x7x50
P_N = 350 bar

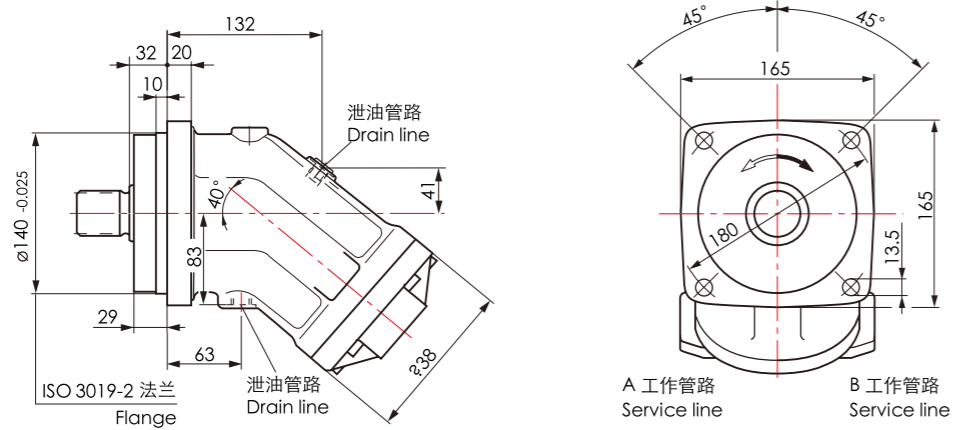


SAE法兰油口, 侧面 Flange ports at side, opposite



安装尺寸图 - 规格80 / 90

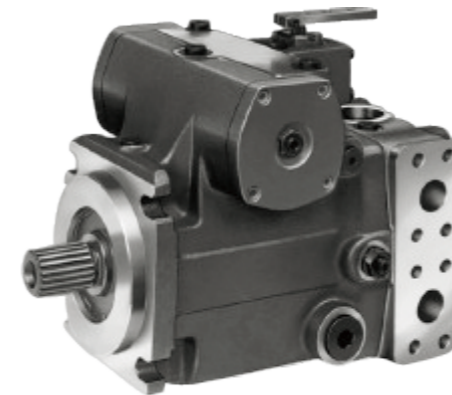
SLNSTALLATION DIMENSIONS - Dimensions size 80 / 90



WA4VTG 轴向柱塞变量泵
WA4VTG AXIAL PISTON VARIABLE PUMP

WA4VTG采用斜盘结构设计的轴向柱塞变量泵，适用于闭式回路的静液压传动。

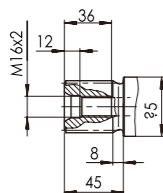
Variable axial piston pump of swashplate design for hydrostatic drives in closed circuit.



轴伸 Drive shafts

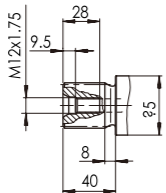
规格 80/90

A 花键轴DIN 5480
W40x2x30x18x9g
P_N = 400 bar



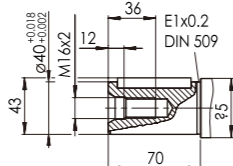
规格 80

Z 花键轴DIN5480
W35x2x30x16x9g
P_N = 400 bar



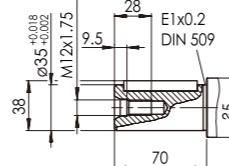
规格 80/90

B 平键直轴,
DIN 6885, As12x8x56
P_N = 350 bar

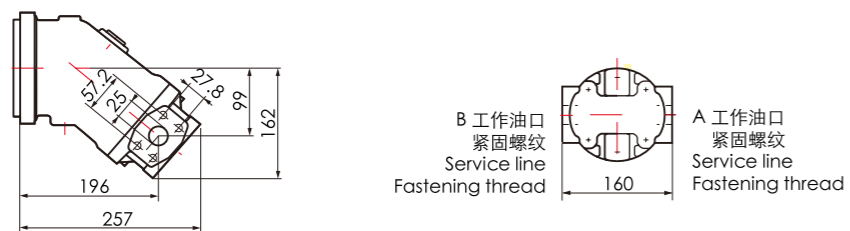


规格 80

P 平键直轴,
DIN 6885, As10x8x56
P_N = 350 bar



SAE法兰油口，侧面 Flange ports at side, opposite



产品的特征和优点

- ① 流量与驱动转速和排量成比例可无级调节。
- ② 斜盘摆动角度增加,流量从零至最大值。
- ③ 当斜盘摆动经过零位时,液流方向平稳换向。
- ④ 高压溢流阀保护液压传动元件(泵和马达)不过载, 同时作为补油压阀。
- ⑤ 内置辅助泵作为补油和控制油泵。
- ⑥ 通过内装的补油溢流阀限制最大补油压力。

Features and Advantages

- ① The flow is proportional to the drive speed and displacement.
- ② The flow increases as the angle of the swashplate is adjusted from zero to its maximum value.
- ③ Flow direction changes smoothly when the swashplate is moved through the neutral position.
- ④ Two pressure-relief valves are provided on the high pressure ports to protect the hydrostatic transmission (pump and motor) from overload.The high-pressure relief valves also function as boost valves.
- ⑤ The integrated boost pump acts as a feed pump and control pressure supply.
- ⑥ The maximum boost pressure is limited by a built-in boost pressure-relief valve.