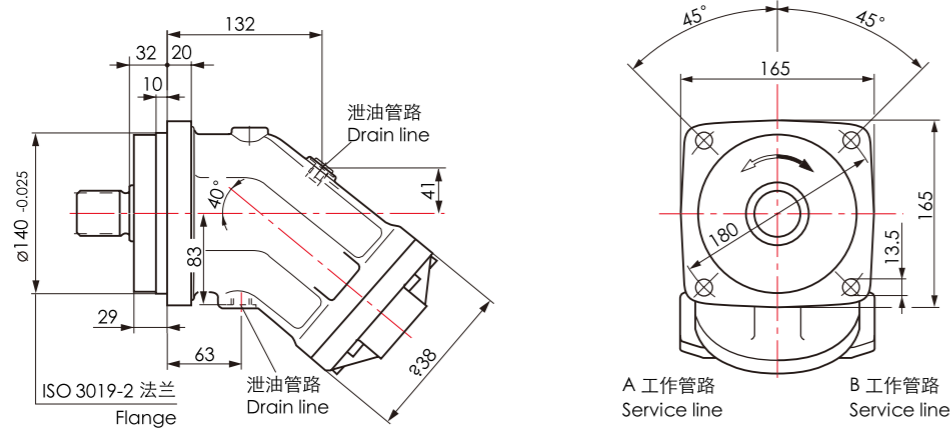


**安装尺寸图 - 规格80 / 90**

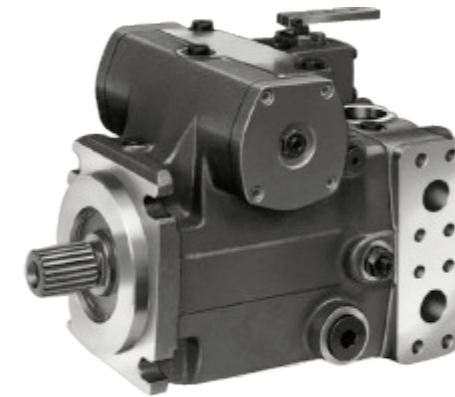
SLNSTALLATION DIMENSIONS - Dimensions size 80 / 90



**WA4VTG 轴向柱塞变量泵**  
WA4VTG AXIAL PISTON VARIABLE PUMP

WA4VTG采用斜盘结构设计的轴向柱塞变量泵，适用于闭式回路的静液压传动。

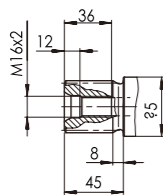
Variable axial piston pump of swashplate design for hydrostatic drives in closed circuit.



**轴伸 Drive shafts**

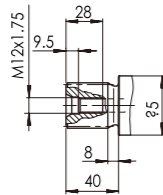
**规格 80/90**

A 花键轴DIN 5480  
W40x2x30x18x9g  
P<sub>N</sub> = 400 bar



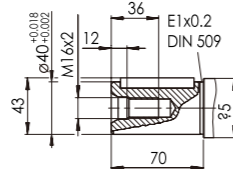
**规格 80**

Z 花键轴DIN5480  
W35x2x30x16x9g  
P<sub>N</sub> = 400 bar



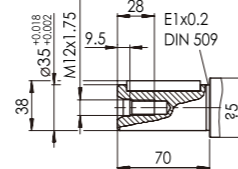
**规格 80/90**

B 平键直轴,  
DIN 6885, As12x8x56  
P<sub>N</sub> = 350 bar

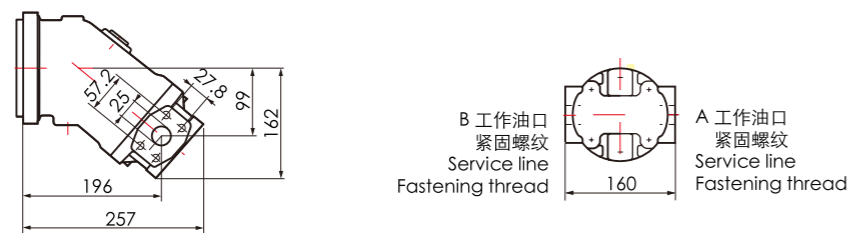


**规格 80**

P 平键直轴,  
DIN 6885, As10x8x56  
P<sub>N</sub> = 350 bar



**SAE法兰油口，侧面 Flange ports at side, opposite**



**产品的特征和优点**

- ① 流量与驱动转速和排量成比例可无级调节。
- ② 斜盘摆动角度增加,流量从零至最大值。
- ③ 当斜盘摆动经过零位时,液流方向平稳换向。
- ④ 高压溢流阀保护液压传动元件(泵和马达)不过载，同时作为补油压阀。
- ⑤ 内置辅助泵作为补油和控制油泵。
- ⑥ 通过内装的补油溢流阀限制最大补油压力。

**Features and Advantages**

- ① The flow is proportional to the drive speed and displacement.
- ② The flow increases as the angle of the swashplate is adjusted from zero to its maximum value.
- ③ Flow direction changes smoothly when the swashplate is moved through the neutral position.
- ④ Two pressure-relief valves are provided on the high pressure ports to protect the hydrostatic transmission (pump and motor) from overload.The high-pressure relief valves also function as boost valves.
- ⑤ The integrated boost pump acts as a feed pump and control pressure supply.
- ⑥ The maximum boost pressure is limited by a built-in boost pressure-relief valve.

## 型号编码 (WA4VTG SERIES TYPE CODE)

**WA4VT G 71 R HW V S C4**

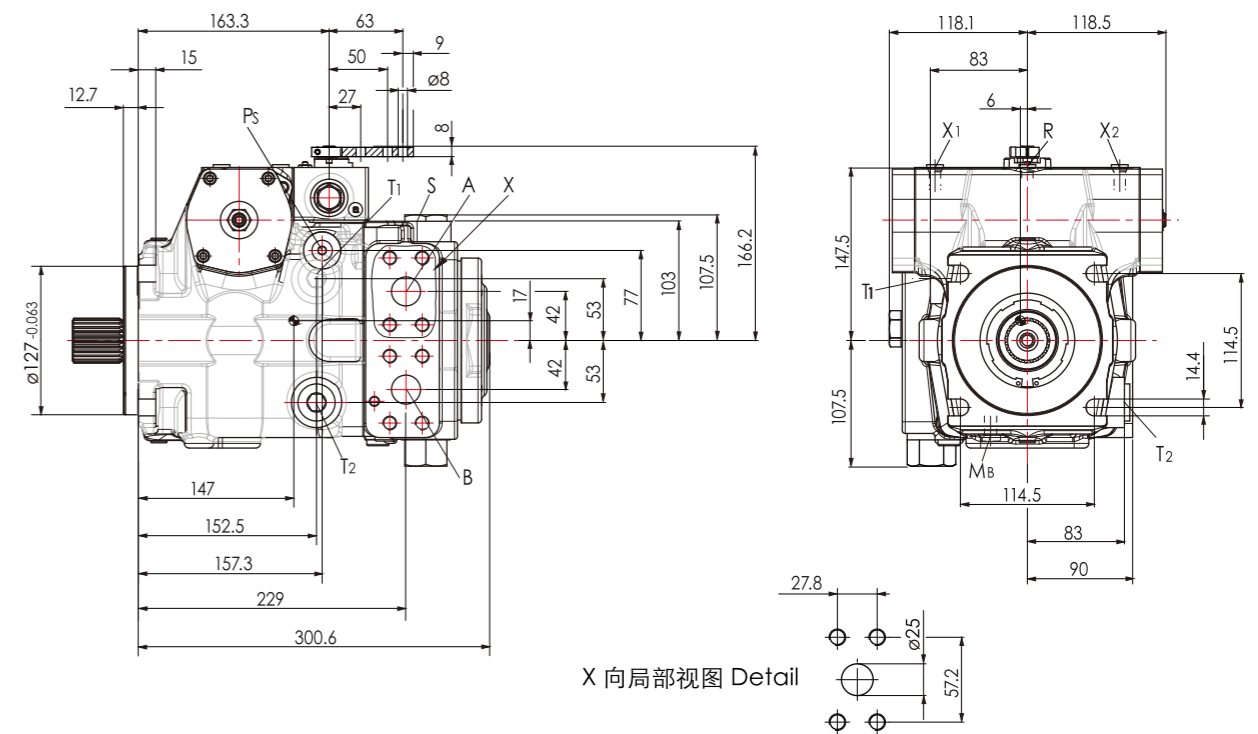
标识 Code	轴向柱塞元件 Axial piston unit	标识 Code	安装法兰 Mounting flange
WA4VT	斜盘设计, 变量泵 Swashplate design, variable	C4	SAE J744,127-4
标识 Code	工作模式 Operation mode	标识 Code	旋花键轴 Splined shaft
G	泵, 闭式回路 Pump, closed circuit	S	不带连接法兰 Without coupling flange
		L	带连接法兰 With coupling flange
标识 Code	排量 Displacement	标识 Code	密封件 Seals
71	71mL/r	V	FKM氟橡胶 Fluor-caoutchouc
标识 Code	旋转方向(从轴端上看) Direction of rotation Viewed at shaft end	标识 Code	控制设备 Control device
R	顺时针 Clockwise	HW	液压比例控制, 机械伺服 Proportional control hydraulic Mechanical servo
L	逆时针 Anticlockwise	Ep3	12V DC, 电气比例控制 Proportional control electric
		Ep4	24V DC, 电气比例控制 Proportional control electric

## 技术参数 (TECHNICAL PARAMETERS)

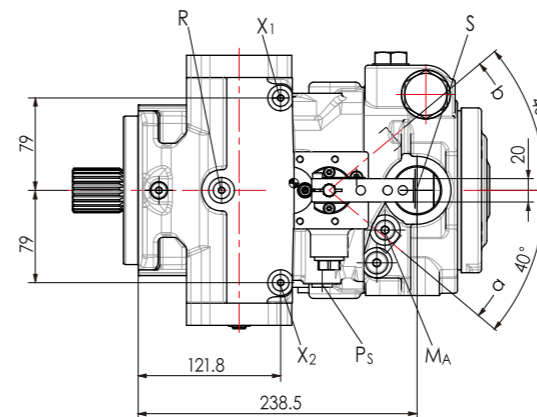
规格 Model	71
变量泵排量 Variable pump displacement	71 mL/r
辅助泵排量 Boost pump displacement	19.6 mL/r
最高转速 Maximum speed	3300 r/min
最低转速 Minimum speed	500 r/min
流量 Flow	234 L/min
功率 Power	156 KW
最大扭矩 Maximum torque	451 Nm
工作方式 Operation mode	闭式系统 Closed circuit

## 安装尺寸图 - 规格 71

SLNSTALLATION DIMENSIONS - Dimensions size 71

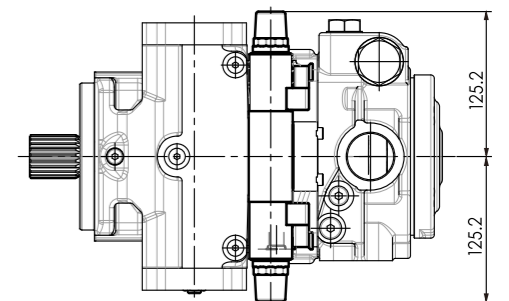
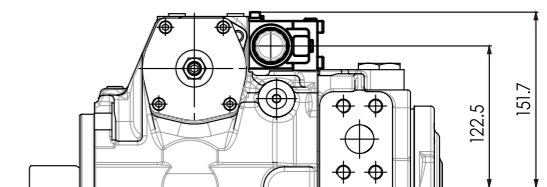


X 向局部视图 Detail



## EP-电气比例控制

EP-Proportional control electric



A、B: 工作管路紧固螺纹 Service line Fixing thread A/B  
S: 吸油 Suction  
T1、T2: 油箱 Tank  
R: 排气口 Air bleed  
X1、X2: 控制压力 Control pressure  
Ps: 先导压力, 入口 Pilot pressure, inlet  
MA、Mb: 测量压力 Measuring pressure A、B