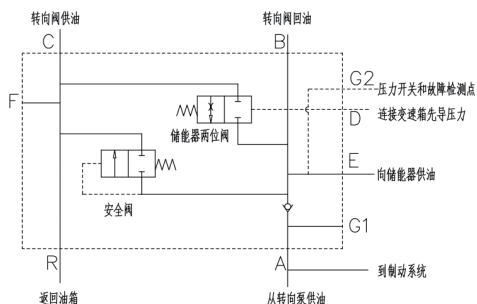


组合制动阀由减压阀，卸荷阀和往复阀组成。减压阀将来自后制动储能器的液压油压力降低，卸荷阀调节压力，经减压阀后提供后制动管路中余压，往复阀依据柱塞位置，为后制动管路提供余压，在脚踏阀或缓行器阀促动后，制动器促动压力克服余压，在后制动盘上产生制动作用。

The Modular brake valve is composed of reducing valve, unloading valve and reciprocating valve. The reducing valve reduces the hydraulic oil pressure from the rear brake accumulator, and the unloading valve regulates the pressure, which provides the residual pressure in the rear brake pipeline after passing through the reducing valve, reciprocating valve provides residual pressure for rear brake line according to plunger position, after the pedal valve or retarder valve is actuated, the brake actuation pressure overcomes the residual pressure and produces braking effect on the rear brake disc.



多路安全阀组由单向阀，储能器两位阀和系统保护安全阀组成的一种安全保护用阀，它通过向系统外排放介质来防止设备内介质压力超过规定数值，对人身安全和设备运行起到多层重要保护作用。

The Multiple relief valve assembly is composed of one-way valve, accumulator two position valve and a System protection safety valve. It prevents the medium pressure in the equipment from exceeding the specified value by discharging the medium out of the system. It plays an important multi-layer protection role for personal safety and equipment operation.