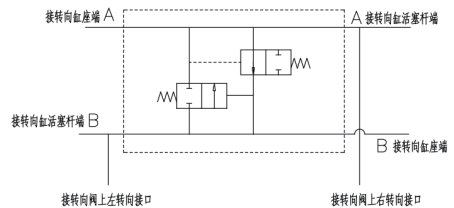


举升系统安装反跳阀是为了防止在卸料过程中，由于车箱的失衡而使举升缸内形成真空。反跳阀还有供给回油的作用，油液从下降回路通过举升阀，回到举升系统油箱。

Bounce valve be used in lifting hydraulic system can help the lifting cylinder avoid vacuum status when the truck body loss balance. Bounce valve with return port ,oil go through control valve at drop off port and return the tank of lifting system .



双向卸荷阀安装在转向阀与转向缸之间之间的液压管路上，其用于减缓对转向缸的冲击载荷，将由于路面冲击引起的缸内瞬时增大的油压，转移到对侧的油缸释放。如不抑制和缓解此冲击，将有可能损坏转向机构的元件。

The two-way unloading valve is installed on the hydraulic pipe between the steering valve and the steering cylinder, which is used to slow down the impact load on the steering cylinder and transfer the instantaneous increase of oil pressure in the cylinder caused by the road impact to the opposite side of the cylinder to release.If this impact is not contained and mitigated, it is possible to damage the steering components.