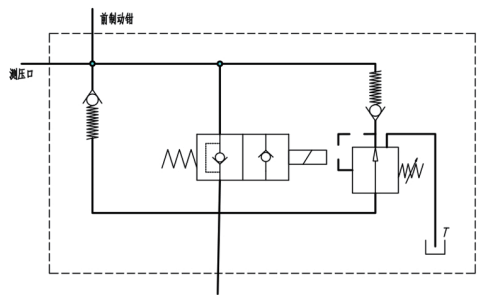


先导阀又为压力控制阀，它将来自液压泵供应的压力降至为3MPa和3.5MPa之间。先导阀与预充氮气1.3MP的储能器安装在一起。

The pilot valve is also a pressure control valve, which reduces the pressure from the hydraulic pump and keep the pressure at 3- 3.5 MPa. The pilot valve is installed with a pre-filled nitrogen 1.3MP accumulator.



当按下50%的减压开关（电磁阀通电开关），可使制动压力减少一半，从而改善车辆在光滑，泥泞路面上的制动性能。电磁阀不通电，由驻车制动阀直接经阀芯供油制动卡钳，电磁阀通电经减压阀供油制动卡钳。

When the solenoid valve power on ,it can make the braking pressure reduce by half.This function can improving the braking performance on the smooth and muddy roads . When the solenoid valve power off , the packing brake valve will directly supply the oil to brake assembly .