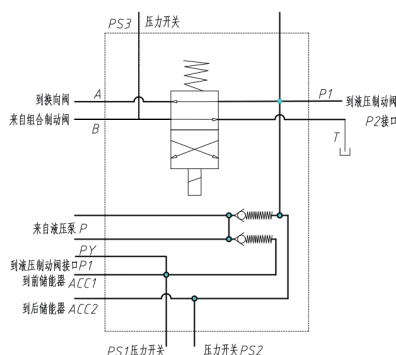


集成阀组是根据液压原理图将各种阀合理地放置到液压阀块的各个平面上，通过内部油道实现整个阀组的功能，具有内部流道短、弯道少、阻力损失少，便于安装维修、抗污染能力强，性能可靠，寿命长等特点。

阀组结构紧凑、液压元件密度高、占用面积小的优点，能够简化液压系统设计和安装，便于实现集成化和标准化，有利于降低制造成本、提高精度及可靠性。奥威特具有专业的设计人员，先进的阀块加工设备 & 检测试验系统、完善的质量控制体系，能够根据客户需求，按液压原理图提供满足各种流量、压力及控制方式的液压集成阀组。阀块材料可分为铝合金，钢件材料等，铝合金表面进行阳极氧化处理，镀锌处理。钢件表面往往采用镀镍处理等。

Manifold valves stack multiple hydraulic valves on different levels of a single valve assembly according to the hydraulic principle diagram to achieve a variety of functions through an internal oil passage. These stack valves are known for their short internal passage, low pressure loss, easy installation and maintenance, non-polluting capacity, reliable performance and long service life. The integrated valve also features a compact structure, high density hydraulic components and a small footprint, making it ideal for simplifying the design and installation of hydraulic systems to ensure integration and standardization to reduce manufacturing costs, improve precision, and improve reliability.

Backed by a team of professional designers and state of the art valve processing equipment, testing systems, and quality control systems, we are able to provide our customers with a variety of hydraulic Manifold valves that integrate multiple functions, including flow control and pressure control. The Manifold valves are available in aluminum alloy or steel materials. The aluminum alloy surface undergoes an anodizing and galvanization process, while the steel surface undergoes nickel plating for corrosion resistance.



制动多路阀将液压油从液压泵传导到液压制动阀，前后制动管路储能器和后轮驻车制动器，此阀也向转向和制动控制油箱回油。当紧急制动开关接通，电磁阀接信号断开（如图所示），油液流出经换向阀到液压制动阀Px实施紧急制动。

Brake manifold valve get the oil from hydraulic pump to hydraulic brake valve. Brake line accumulators ,brake assembly. Meanwhile it returns oil to steering and brake's tank.when the emergency switch on .the solenoid signal will directly off (as drawing say). Oil flow out through selector valve to hydraulic brake valve Px port to implement the emergency brake .