



WVT系列液压制动阀是根据目前主流市场研发的，往往应用于双制动系统。

主要有以下优点：1. 响应速度快。2. 制动平稳，提高驾驶舒适性。3. 可匹配传感器，实现电液控制。4. 设有紧急制动，当踏板功能失效时，依旧能实施制动功能。

WVT series hydraulic brake valve is developed according to the current mainstream market , mostly be used in dual brake system , mostly be used in dual brake system , It has the following advantages:

1. Fast response .
2. Smooth braking to improve driving comfort.
3. The sensor can be matched to realize the electro hydraulic control.

4. Emergency braking is provided. The braking function can still be implemented when the pedal function failure.

型号说明

Specifications

| | | | | | | | | | | | | | | | | | | | | |
|-----|---|----|---|----|---|-----|---|-----|---|----|---|----|---|----|---|---|---|---|---|---|
| WVT | — | 20 | — | 20 | — | 1PX | — | RV1 | — | N | — | S | — | 1 | 5 | 9 | & | 0 | 5 | 2 |
| 01 | — | 02 | — | 03 | — | 04 | — | 05 | — | 06 | — | 07 | — | 08 | | | | | | |

| | | | | | | | | | | | | | | | | | | | | |
|----|--|--|--|--|--|--|--|--|--|--|--|--|--|--|--|--|--|--|--|--|
| 01 | WVT系列双液路制动踏板阀 / WTT serials dual hydraulic brake pedal valve | | | | | | | | | | | | | | | | | | | |
|----|--|--|--|--|--|--|--|--|--|--|--|--|--|--|--|--|--|--|--|--|

起始角度设定

Start Angle Set

| | | |
|----|---|----|
| 02 | 20° 45° | 20 |
| | 30° 55° | |
| | 35° 65° | |
| | 特定角度请与我方联系 / Please contact us for special rotation | |

有效旋转角度

Effective Rotation Angle

| | | |
|----|---|----|
| 03 | 16° | 16 |
| | 20° | 20 |
| | 22° | 22 |
| | 特定旋转角度请与我方联系 / Please contact us for special angles | |

紧急制动油口

Oil port - Emergency Brake

| | | |
|----|---|-----|
| 04 | 一个紧急制动油口 / With one emergency oil port | 1PX |
| | 两个紧急制动油口 / With two emergency oil ports | 2PX |

辅助油口

Oil port - Supplement

| | | |
|----|---|-----|
| 05 | 无辅助阀块 / None auxiliary valve block | N |
| | 油口后侧辅助阀块 / The oil ports are rear side of valve block | RV1 |
| | 油口两侧辅助阀块 / The oil ports are both side of valve block | SV1 |
| | 特定阀块 /Special valve block design | *** |

接近开关

Proximity Switch

| | | | |
|----|------------------|-------------------|---------------|
| 06 | 无标接近开关 / None | | N |
| | NPN开关 / NPN type | 常开或常闭 / No or Off | NPN&(No, Off) |
| | PNP开关 / PNP type | 常开或常闭 / No or Off | PNP&(No, Off) |

角度传感器

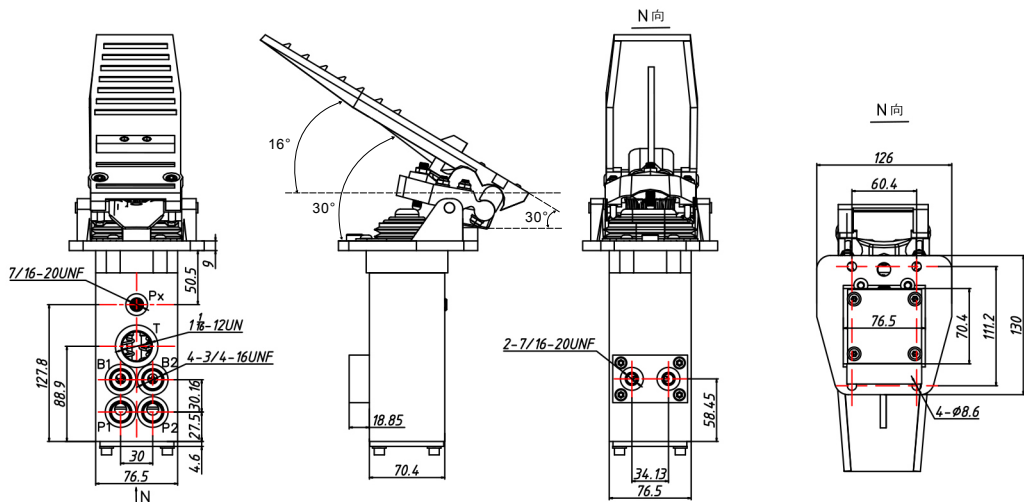
Angle Sensor

| | | |
|----|---------------|---|
| 07 | 无角度传感器 / None | N |
| | 带角度传感器 / With | S |

压力设定值 (bar)

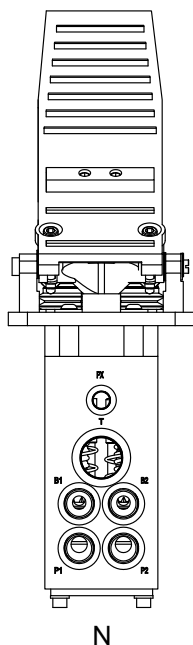
Pressure Set

| | | | |
|----|----------------|--------|-----|
| 08 | B1、B2 < 200bar | B1=□□□ | XXX |
| | | B2=□□□ | XXX |

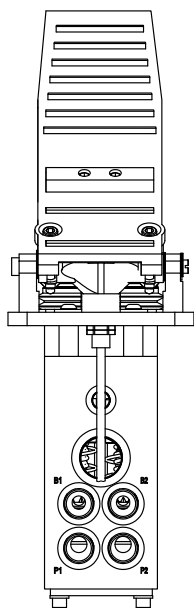


例：订货型号为 WVT-30-16-IPX-RVI-N-N-159&52

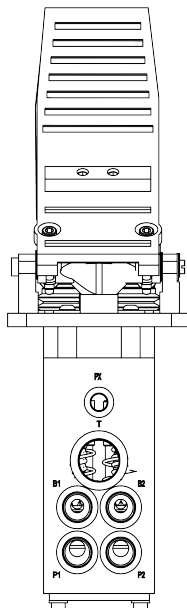
E.g. Order model : WVT-30-16-IPX-RVI-N-N-159&52



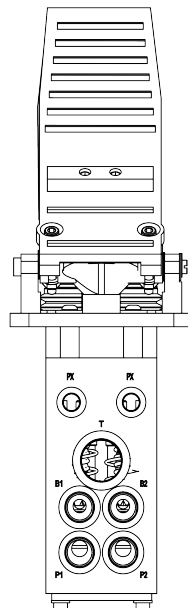
N



NPN&(No, Off) or PNP&(No, Off)



1PX



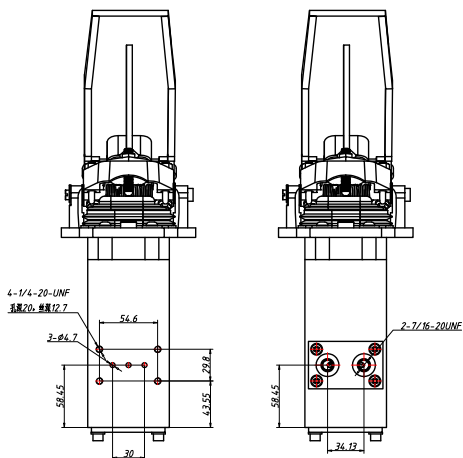
2PX

接近开关的示意图，选项06

Proximity switch drawing, option 06

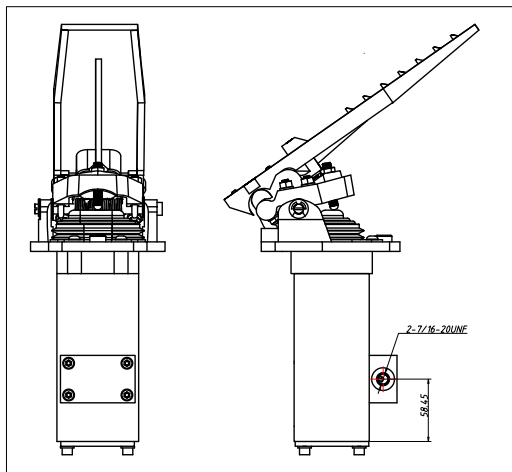
紧急制动油口的示意图，选项04

Oil port - emergency brake drawing, option 04



N

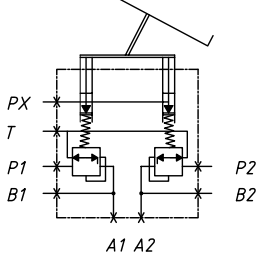
RV1



SV1

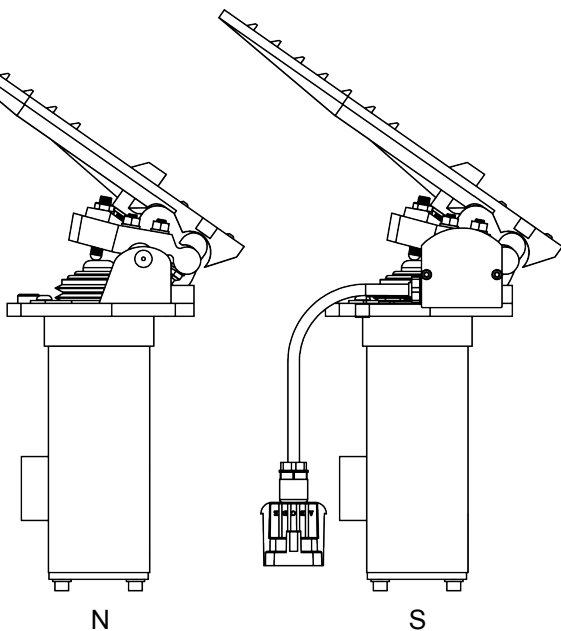
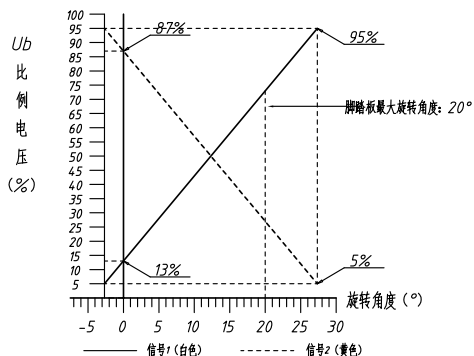
辅助油口的示意图, 选项05
Oil port - supplement drawing, option 05

液压原理图



A1 A2

电气输出曲线



N

S

角度传感器的示意图, 选项07
Angle sensor drawing, option 07

此图仅作参考使用, 详细信息请于我方联系

This drawing only for reference, the detail please contact with us